

Floors 4 — 12
Residence C

Highlights
1 Bedroom
1 Bathroom
Powder Room

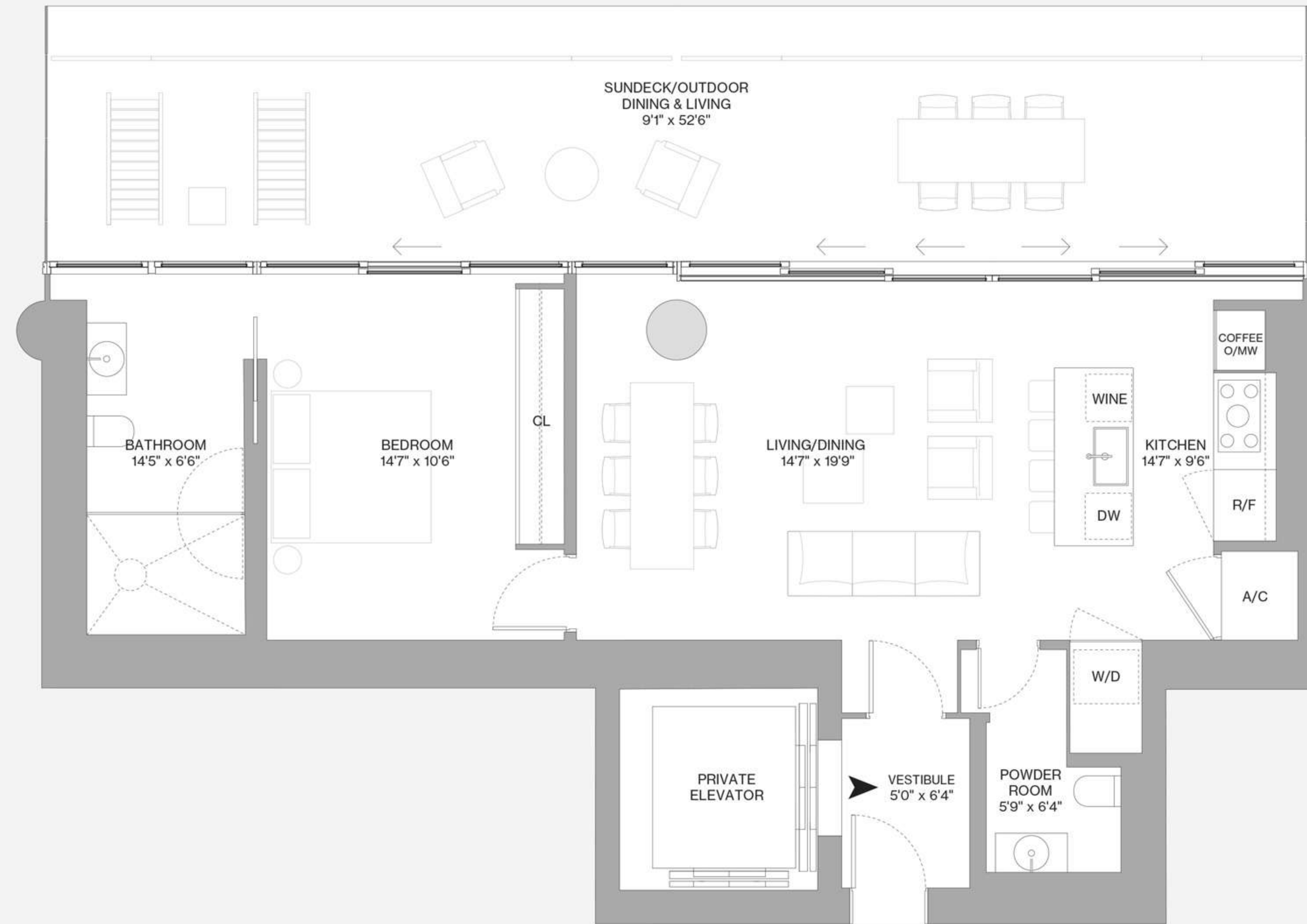
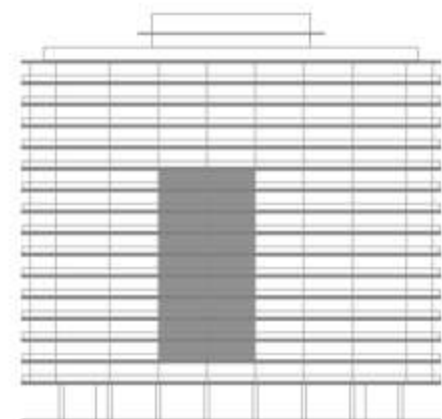
Indoor Area
1018 ft² / 95 m²

Outdoor Living
564 ft² / 52 m²

Total Area
1582 ft² / 147 m²

Balcony Linear Length
52'6"

Scale
5/32" = 1'0"



This project is being developed by 8701 Collins Development, LLC, a Delaware limited liability company ("Developer"), which has a limited right to use the trademarked names and logos of Terra and Bizzzi & Partners Development. Any and all statements, disclosures and/or representations shall be deemed made by Developer and not by Terra and Bizzzi & Partners Development and you agree to look solely to Developer (and not to Terra and Bizzzi & Partners Development and/or each of their affiliates) with respect to any and all matters relating to the sales and marketing and/or development of the project. Stated square footages and dimensions are measured to the exterior boundaries of the exterior walls and the centerline of interior demising walls and in fact vary from the square footage and dimensions that would be determined by using the description and definition of the "Unit" set forth in the Declaration (which generally only includes the interior airspace between the perimeter walls and excludes all interior structural components and other common elements). This method is generally used in sales materials and is provided to allow a prospective buyer to compare the Units with units in other condominium projects that utilize the same method. Measurements of rooms set forth on this floor plan are generally taken at the farthest points of each given room (as if the room were a perfect rectangle), without regard for any cutouts or variations. Accordingly, the area of the actual room will typically be smaller than the product obtained by multiplying the stated length and width. All dimensions are estimates which will vary with actual construction, and all floor plans, specifications and other development plans are subject to change and will not necessarily accurately reflect the final plans and specifications for the development. ORAL REPRESENTATIONS CANNOT BE RELIED UPON AS CORRECTLY STATING THE REPRESENTATIONS OF THE DEVELOPER. FOR CORRECT REPRESENTATIONS, MAKE REFERENCE TO THIS BROCHURE AND TO THE DOCUMENTS REQUIRED BY SECTION 718.503, FLORIDA STATUTES, TO BE FURNISHED BY A DEVELOPER TO A BUYER OR LESSEE. These materials are not intended to be an offer to sell, or solicitation to buy a unit in the condominium. Such an offering shall only be made pursuant to the prospectus (offering circular) for the condominium and no statements should be relied upon unless made in the prospectus or in the applicable purchase agreement. In no event shall any solicitation, offer or sale of a unit in the condominium be made in, or to residents of, any state or country in which such activity would be unlawful.



Floors 3 — 10
Residence D

Highlights
2 Bedrooms
2 Bathrooms
Powder Room

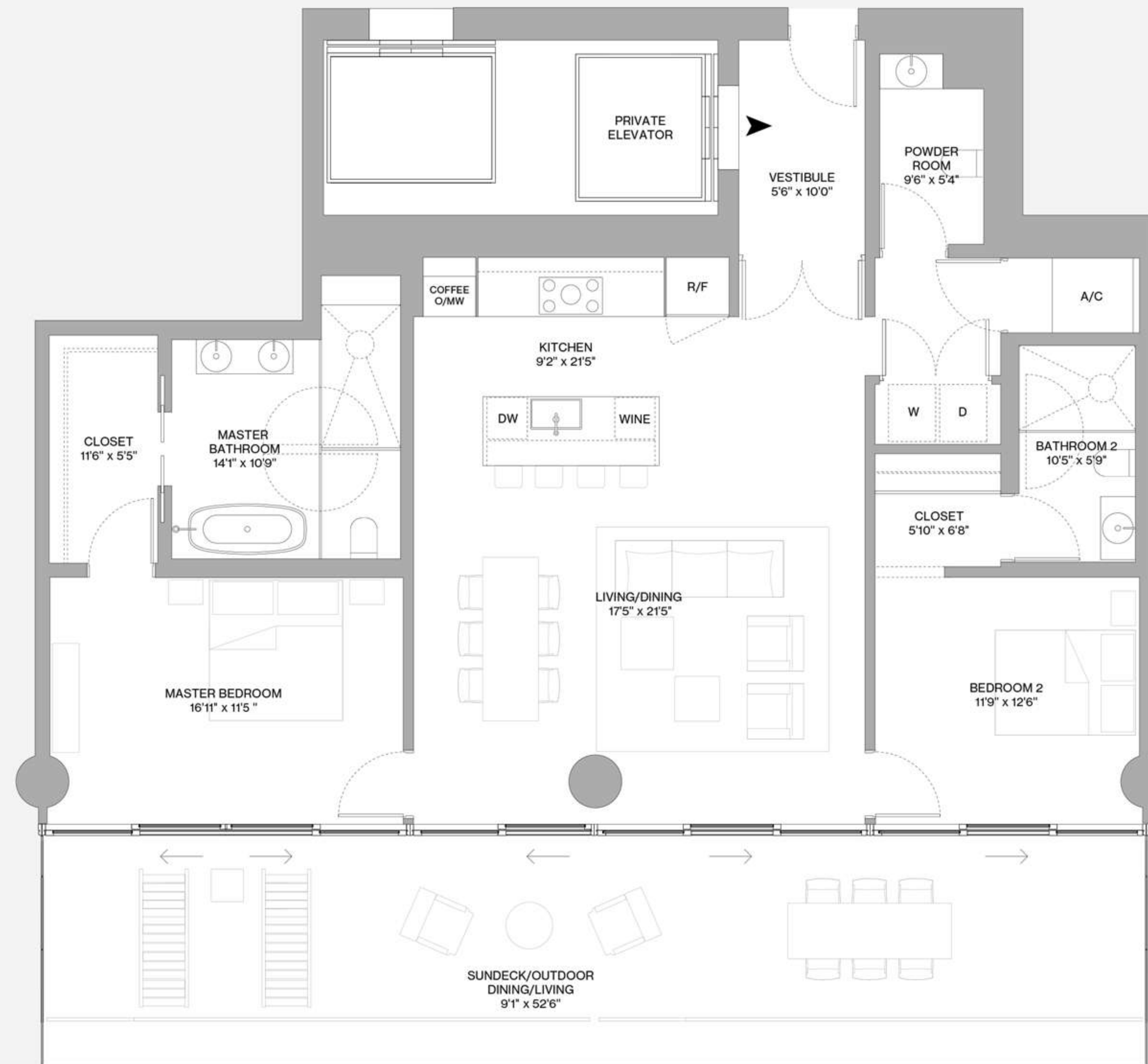
Indoor Area
1594 ft² / 148 m²

Outdoor Living
578 ft² / 54 m²

Total Area
2172 ft² / 202 m²

Balcony Linear Length
52'6"

Scale
1/8" = 1'0"



This project is being developed by 8701 Collins Development, LLC, a Delaware limited liability company ("Developer"), which has a limited right to use the trademarked names and logos of Terra and Buzzi & Partners Development. Any and all statements, disclosures and/or representations shall be deemed made by Developer and not by Terra and Buzzi & Partners Development and you agree to look solely to Developer (and not to Terra and Buzzi & Partners Development and/or each of their affiliates) with respect to any and all matters relating to the sales and marketing and/or development of the project. Stated square footages and dimensions are measured to the exterior boundaries of the exterior walls and the centerline of interior demising walls and in fact vary from the square footage and dimensions that would be determined by using the description and definition of the "Unit" set forth in the Declaration (which generally only includes the interior airspace between the perimeter walls and excludes all interior structural components and other common elements). This method is generally used in sales materials and is provided to allow a prospective buyer to compare the Units with units in other condominium projects that utilize the same method. Measurements of rooms set forth on this floor plan are generally taken at the farthest points of each given room (as if the room were a perfect rectangle), without regard for any cutouts or variations. Accordingly, the area of the actual room will typically be smaller than the product obtained by multiplying the stated length and width. All dimensions are estimates which will vary with actual construction, and all floor plans, specifications and other development plans are subject to change and will not necessarily accurately reflect the final plans and specifications for the development. ORAL REPRESENTATIONS CANNOT BE RELIED UPON AS CORRECTLY STATING THE REPRESENTATIONS OF THE DEVELOPER. FOR CORRECT REPRESENTATIONS, MAKE REFERENCE TO THIS BROCHURE AND TO THE DOCUMENTS REQUIRED BY SECTION 718.503, FLORIDA STATUTES, TO BE FURNISHED BY A DEVELOPER TO A BUYER OR LESSEE. These materials are not intended to be an offer to sell, or solicitation to buy a unit in the condominium. Such an offering shall only be made pursuant to the prospectus (offering circular) for the condominium and no statements should be relied upon unless made in the prospectus or in the applicable purchase agreement. In no event shall any solicitation, offer or sale of a unit in the condominium be made in, or to residents of, any state or country in which such activity would be unlawful.



Floors 4 – 12
Residence E

Highlights
2 Bedrooms
2 Bathrooms
Powder Room

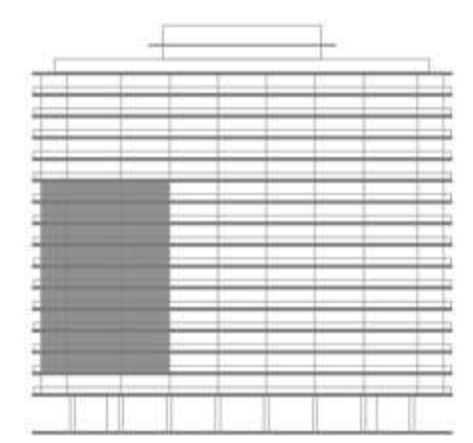
Indoor Area
1654 ft² / 154 m²

Outdoor Living
1433 ft² / 133 m²

Total Area
3087 ft² / 287 m²

Balcony Linear Length
100'0"

Scale
1/8" = 1'0"



This project is being developed by 8701 Collins Development, LLC, a Delaware limited liability company ("Developer"), which has a limited right to use the trademarked names and logos of Terra and Bizzi & Partners Development. Any and all statements, disclosures and/or representations shall be deemed made by Developer and not by Terra and Bizzi & Partners Development and you agree to look solely to Developer (and not to Terra and Bizzi & Partners Development and/or each of their affiliates) with respect to any and all matters relating to the sales and marketing and/or development of the project. Stated square footages and dimensions are measured to the exterior boundaries of the exterior walls and in fact vary from the square footage and dimensions that would be determined by using the description and definition of the "Unit" set forth in the Declaration (which generally only includes the interior airspace between the perimeter walls and excludes all interior structural components and other common elements). This method is generally used in sales materials and is provided to allow a prospective buyer to compare the Units with units in other condominium projects that utilize the same method. Measurements of rooms set forth on this floor plan are generally taken at the farthest points of each given room (as if the room were a perfect rectangle), without regard for any cutouts or variations. Accordingly, the area of the actual room will typically be smaller than the product obtained by multiplying the stated length and width. All dimensions are estimates which will vary with actual construction, and all floor plans, specifications and other development plans are subject to change and will not necessarily accurately reflect the final plans and specifications for the development. ORAL REPRESENTATIONS CANNOT BE RELIED UPON AS CORRECTLY STATING THE REPRESENTATIONS OF THE DEVELOPER. FOR CORRECT REPRESENTATIONS, MAKE REFERENCE TO THIS BROCHURE AND TO THE DOCUMENTS REQUIRED BY SECTION 718.503, FLORIDA STATUTES, TO BE FURNISHED BY A DEVELOPER TO A BUYER OR LESSEE. These materials are not intended to be an offer to sell, or solicitation to buy a unit in the condominium. Such an offering shall only be made pursuant to the prospectus (offering circular) for the condominium and no statements should be relied upon unless made in the prospectus or in the applicable purchase agreement. In no event shall any solicitation, offer or sale of a unit in the condominium be made in, or to residents of, any state or country in which such activity would be unlawful.



Floors 3 — 10
Residence F1

Highlights
2 Bedrooms
2 Bathrooms
Powder Room

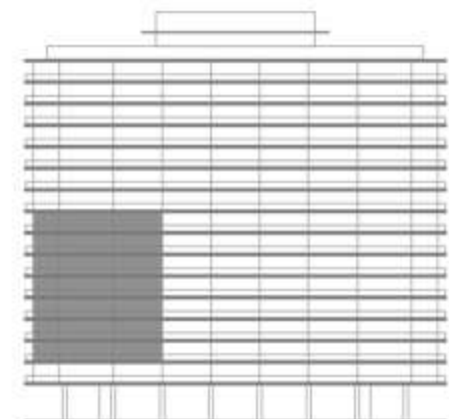
Indoor Area
1773 ft² / 165 m²

Outdoor Living
1433 ft² / 133 m²

Total Area
3206 ft² / 298 m²

Balcony Linear Length
100'0"

Scale
1/8" = 1'0"



This project is being developed by 8701 Collins Development, LLC, a Delaware limited liability company ("Developer"), which has a limited right to use the trademarked names and logos of Terra and Bizzi & Partners Development. Any and all statements, disclosures and/or representations shall be deemed made by Developer and not by Terra and Bizzi & Partners Development and you agree to look solely to Developer (and not to Terra and Bizzi & Partners Development and/or each of their affiliates) with respect to any and all matters relating to the sales and marketing and/or development of the project. Stated square footages and dimensions are measured to the exterior boundaries of the exterior walls and the centerline of interior demising walls and in fact vary from the square footage and dimensions that would be determined by using the description and definition of the "Unit" set forth in the Declaration (which generally only includes the interior airspace between the perimeter walls and excludes all interior structural components and other common elements). This method is generally used in sales materials and is provided to allow a prospective buyer to compare the Units with units in other condominium projects that utilize the same method. Measurements of rooms set forth on this floor plan are generally taken at the farthest points of each given room (as if the room were a perfect rectangle), without regard for any cutouts or variations. Accordingly, the area of the actual room will typically be smaller than the product obtained by multiplying the stated length and width. All dimensions are estimates which will vary with actual construction, and all floor plans, specifications and other development plans are subject to change and will not necessarily accurately reflect the final plans and specifications for the development. ORAL REPRESENTATIONS CANNOT BE RELIED UPON AS CORRECTLY STATING THE REPRESENTATIONS OF THE DEVELOPER. FOR CORRECT REPRESENTATIONS, MAKE REFERENCE TO THIS BROCHURE AND TO THE DOCUMENTS REQUIRED BY SECTION 718.503, FLORIDA STATUTES, TO BE FURNISHED BY A DEVELOPER TO A BUYER OR LESSEE. These materials are not intended to be an offer to sell, or solicitation to buy a unit in the condominium. Such an offering shall only be made pursuant to the prospectus (offering circular) for the condominium and no statements should be relied upon unless made in the prospectus or in the applicable purchase agreement. In no event shall any solicitation, offer or sale of a unit in the condominium be made in, or to residents of, any state or country in which such activity would be unlawful.



Floors 11 — 12
Residence F2

Highlights
2 Bedrooms
2 Bathrooms
Powder Room

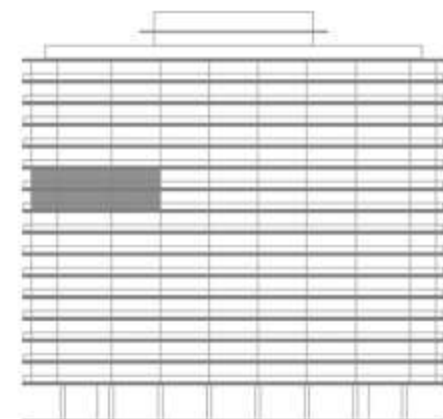
Indoor Area
1843 ft² / 171 m²

Outdoor Living
1433 ft² / 133 m²

Total Area
3276 ft² / 304 m²

Balcony Linear Length
100'0"

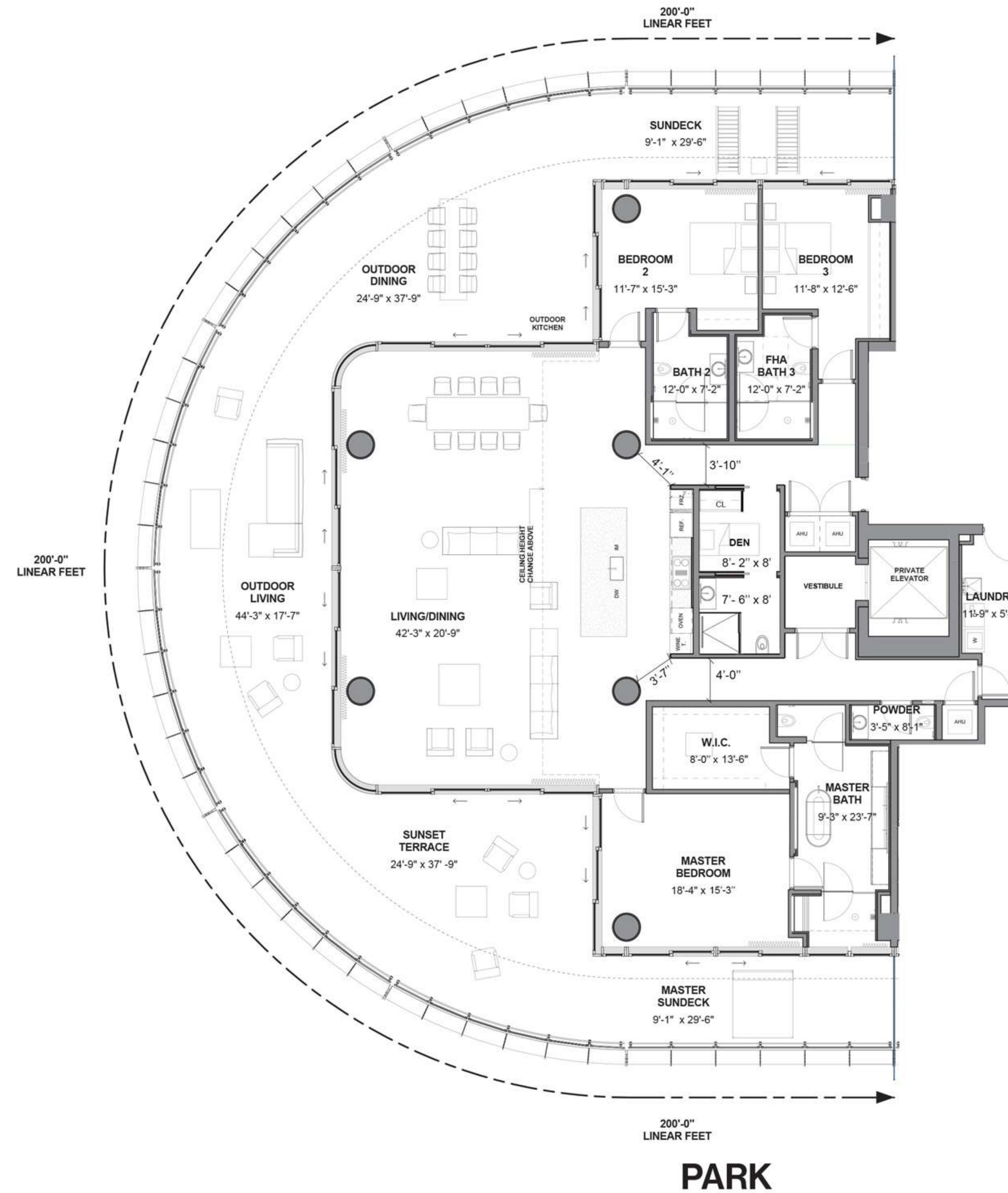
Scale
1/8" = 1'0"



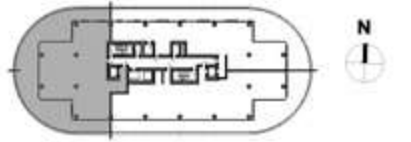
This project is being developed by 8701 Collins Development, LLC, a Delaware limited liability company ("Developer"), which has a limited right to use the trademarked names and logos of Terra and Bizzi & Partners Development. Any and all statements, disclosures and/or representations shall be deemed made by Developer and not by Terra and Bizzi & Partners Development and you agree to look solely to Developer (and not to Terra and Bizzi & Partners Development and/or each of their affiliates) with respect to any and all matters relating to the sales and marketing and/or development of the project. Stated square footages and dimensions are measured to the exterior boundaries of the exterior walls and the centerline of interior demising walls and in fact vary from the square footage and dimensions that would be determined by using the description and definition of the "Unit" set forth in the Declaration (which generally only includes the interior airspace between the perimeter walls and excludes all interior structural components and other common elements). This method is generally used in sales materials and is provided to allow a prospective buyer to compare the Units with units in other condominium projects that utilize the same method. Measurements of rooms set forth on this floor plan are generally taken at the farthest points of each given room (as if the room were a perfect rectangle), without regard for any cutouts or variations. Accordingly, the area of the actual room will typically be smaller than the product obtained by multiplying the stated length and width. All dimensions are estimates which will vary with actual construction, and all floor plans, specifications and other development plans are subject to change and will not necessarily accurately reflect the final plans and specifications for the development. ORAL REPRESENTATIONS CANNOT BE RELIED UPON AS CORRECTLY STATING THE REPRESENTATIONS OF THE DEVELOPER. FOR CORRECT REPRESENTATIONS, MAKE REFERENCE TO THIS BROCHURE AND TO THE DOCUMENTS REQUIRED BY SECTION 718.503, FLORIDA STATUTES, TO BE FURNISHED BY A DEVELOPER TO A BUYER OR LESSEE. These materials are not intended to be an offer to sell, or solicitation to buy a unit in the condominium. Such an offering shall only be made pursuant to the prospectus (offering circular) for the condominium and no statements should be relied upon unless made in the prospectus or in the applicable purchase agreement. In no event shall any solicitation, offer or sale of a unit in the condominium be made in, or to residents of, any state or country in which such activity would be unlawful.



PRIVATE PARK



Residence 1705
 Type LPH
 Beds 3 / Den 1/ Baths 4.5
 Interior: 3460 SF/ 322 SM
 Outdoor Living: 2867 SF/ 266 SM
 Total: 6327 SF/ 588 SM



This project is being developed by 8701 Collins Development, LLC, a Delaware limited liability company ("Developer"), which has a limited right to use the trademarked names and logos of Terra and Bizzi & Partners Development. Any and all statements, disclosures and/or representations shall be deemed made by Developer and not by Terra and Bizzi Partners & Development and you agree to look solely to Developer (and not to Terra and Bizzi & Partners Development and/or each of their affiliates) with respect to any and all matters relating to the sales and marketing and/or development of the project. ORAL REPRESENTATIONS CANNOT BE RELIED UPON AS CORRECTLY STATING THE REPRESENTATIONS OF THE DEVELOPER. FOR CORRECT REPRESENTATIONS, MAKE REFERENCE TO THIS BROCHURE AND TO THE DOCUMENTS REQUIRED BY SECTION 718.503, FLORIDA STATUTES, TO BE FURNISHED BY A DEVELOPER TO A BUYER OR LESSEE. These materials are not intended to be an offer to sell, or solicitation to buy a unit in the condominium. Such an offering shall only be made pursuant to the prospectus (offering circular) for the condominium and no statements should be relied upon unless made in the prospectus or in the applicable purchase agreement. In no event shall any solicitation, offer or sale of a unit in the condominium be made in, or to residents of, any state or country in which such activity would be unlawful. Stated square footages and dimensions are measured to the exterior boundaries of the exterior walls and the centerline of interior demising walls and in fact vary from the square footage and dimensions that would be determined by using the description and definition of the "Unit" set forth in the Declaration (which generally only includes the interior airspace between the perimeter walls and excludes all interior structural components and other common elements). This method is generally used in sales materials and is provided to allow a prospective buyer to compare the Units with units in other condominium projects that utilize the same method. Measurements of rooms set forth on this floor plan are generally taken at the farthest points of each given room (as if the room were a perfect rectangle), without regard for any cutouts or variations. Accordingly, the area of the actual room will typically be smaller than the product obtained by multiplying the stated length and width. All dimensions are estimates which will vary with actual construction, and all floor plans, specifications and other development plans are subject to change and will not necessarily accurately reflect the final plans and specifications for the development. 🏠

No furniture to be included

Floors 3 — 12
Residence A

Highlights
3 Bedrooms
3 Bathrooms
Powder Room

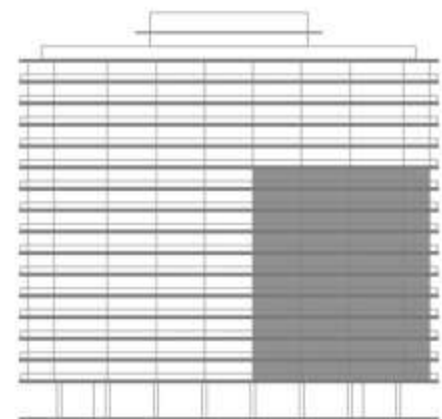
Indoor Area
2421 ft² / 225 m²

Outdoor Living
1715 ft² / 159 m²

Total Area
4136 ft² / 388 m²

Balcony Linear Length
125'11"

Scale
1/8" = 1'0"



This project is being developed by 8701 Collins Development, LLC, a Delaware limited liability company ("Developer"), which has a limited right to use the trademarked names and logos of Terra and Bizzzi & Partners Development. Any and all statements, disclosures and/or representations shall be deemed made by Developer and not by Terra and Bizzzi & Partners Development and you agree to look solely to Developer (and not to Terra and Bizzzi & Partners Development and/or each of their affiliates) with respect to any and all matters relating to the sales and marketing and/or development of the project. Stated square footages and dimensions are measured to the exterior boundaries of the exterior walls and the centerline of interior demising walls and in fact vary from the square footage and dimensions that would be determined by using the description and definition of the "Unit" set forth in the Declaration (which generally only includes the interior airspace between the perimeter walls and excludes all interior structural components and other common elements). This method is generally used in sales materials and is provided to allow a prospective buyer to compare the Units with units in other condominium projects that utilize the same method. Measurements of rooms set forth on this floor plan are generally taken at the farthest points of each given room (as if the room were a perfect rectangle), without regard for any cutouts or variations. Accordingly, the area of the actual room will typically be smaller than the product obtained by multiplying the stated length and width. All dimensions are estimates which will vary with actual construction, and all floor plans, specifications and other development plans are subject to change and will not necessarily accurately reflect the final plans and specifications for the development. ORAL REPRESENTATIONS CANNOT BE RELIED UPON AS CORRECTLY STATING THE REPRESENTATIONS OF THE DEVELOPER. FOR CORRECT REPRESENTATIONS, MAKE REFERENCE TO THIS BROCHURE AND TO THE DOCUMENTS REQUIRED BY SECTION 718.503, FLORIDA STATUTES, TO BE FURNISHED BY A DEVELOPER TO A BUYER OR LESSEE. These materials are not intended to be an offer to sell, or solicitation to buy a unit in the condominium. Such an offering shall only be made pursuant to the prospectus (offering circular) for the condominium and no statements should be relied upon unless made in the prospectus or in the applicable purchase agreement. In no event shall any solicitation, offer or sale of a unit in the condominium be made in, or to residents of, any state or country in which such activity would be unlawful.



Floors 3 — 10
Residence B

Highlights
3 Bedrooms
3 Bathrooms
Powder Room

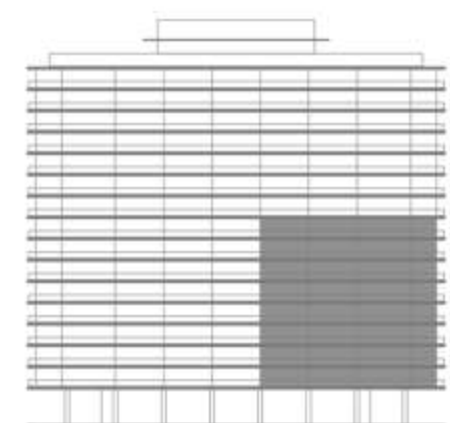
Indoor Area
2467 ft² / 229 m²

Outdoor Living
1715 ft² / 159 m²

Total Area
4182 ft² / 388 m²

Balcony Linear Length
125'11"

Scale
1/8" = 1'0"



This project is being developed by 8701 Collins Development, LLC, a Delaware limited liability company ("Developer"), which has a limited right to use the trademarked names and logos of Terra and Bizzi & Partners Development. Any and all statements, disclosures and/or representations shall be deemed made by Developer and not by Terra and Bizzi & Partners Development and you agree to look solely to Developer (and not to Terra and Bizzi & Partners Development and/or each of their affiliates) with respect to any and all matters relating to the sales and marketing and/or development of the project. Stated square footages and dimensions are measured to the exterior boundaries of the exterior walls and the centerline of interior demising walls and in fact vary from the square footage and dimensions that would be determined by using the description and definition of the "Unit" set forth in the Declaration (which generally only includes the interior airspace between the perimeter walls and excludes all interior structural components and other common elements). This method is generally used in sales materials and is provided to allow a prospective buyer to compare the Units with units in other condominium projects that utilize the same method. Measurements of rooms set forth on this floor plan are generally taken at the farthest points of each given room (as if the room were a perfect rectangle), without regard for any cutouts or variations. Accordingly, the area of the actual room will typically be smaller than the product obtained by multiplying the stated length and width. All dimensions are estimates which will vary with actual construction, and all floor plans, specifications and other development plans are subject to change and will not necessarily accurately reflect the final plans and specifications for the development. ORAL REPRESENTATIONS CANNOT BE RELIED UPON AS CORRECTLY STATING THE REPRESENTATIONS OF THE DEVELOPER. FOR CORRECT REPRESENTATIONS, MAKE REFERENCE TO THIS BROCHURE AND TO THE DOCUMENTS REQUIRED BY SECTION 718.503, FLORIDA STATUTES, TO BE FURNISHED BY A DEVELOPER TO A BUYER OR LESSEE. These materials are not intended to be an offer to sell, or solicitation to buy a unit in the condominium. Such an offering shall only be made pursuant to the prospectus (offering circular) for the condominium and no statements should be relied upon unless made in the prospectus or in the applicable purchase agreement. In no event shall any solicitation, offer or sale of a unit in the condominium be made in, or to residents of, any state or country in which such activity would be unlawful.



Floors 14 — 17
Residence EF

Highlights
3 Bedrooms
3 Bathrooms
Powder Room

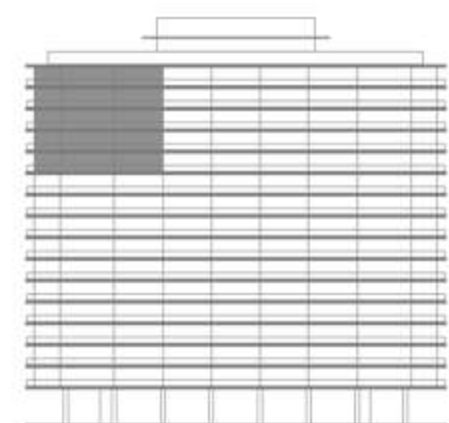
Indoor Area
3460 ft² / 322 m²

Outdoor Living
2867 ft² / 266 m²

Total Area
6327 ft² / 588 m²

Balcony Linear Length
200'0"

Scale
3/32" = 1'0"



PARK



This project is being developed by 8701 Collins Development, LLC, a Delaware limited liability company ("Developer"), which has a limited right to use the trademarked names and logos of Terra and Bizzi & Partners Development. Any and all statements, disclosures and/or representations shall be deemed made by Developer and not by Terra and Bizzi & Partners Development and you agree to look solely to Developer (and not to Terra and Bizzi & Partners Development and/or each of their affiliates) with respect to any and all matters relating to the sales and marketing and/or development of the project. Stated square footages and dimensions are measured to the exterior boundaries of the exterior walls and the centerline of interior demising walls and in fact vary from the square footage and dimensions that would be determined by using the description and definition of the "Unit" set forth in the Declaration (which generally only includes the interior airspace between the perimeter walls and excludes all interior structural components and other common elements). This method is generally used in sales materials and is provided to allow a prospective buyer to compare the Units with units in other condominium projects that utilize the same method. Measurements of rooms set forth on this floor plan are generally taken at the farthest points of each given room (as if the room were a perfect rectangle), without regard for any cutouts or variations. Accordingly, the area of the actual room will typically be smaller than the product obtained by multiplying the stated length and width. All dimensions are estimates which will vary with actual construction, and all floor plans, specifications and other development plans are subject to change and will not necessarily accurately reflect the final plans and specifications for the development. ORAL REPRESENTATIONS CANNOT BE RELIED UPON AS CORRECTLY STATING THE REPRESENTATIONS OF THE DEVELOPER. FOR CORRECT REPRESENTATIONS, MAKE REFERENCE TO THIS BROCHURE AND TO THE DOCUMENTS REQUIRED BY SECTION 718.503, FLORIDA STATUTES, TO BE FURNISHED BY A DEVELOPER TO A BUYER OR LESSEE. These materials are not intended to be an offer to sell, or solicitation to buy a unit in the condominium. Such an offering shall only be made pursuant to the prospectus (offering circular) for the condominium and no statements should be relied upon unless made in the prospectus or in the applicable purchase agreement. In no event shall any solicitation, offer or sale of a unit in the condominium be made in, or to residents of, any state or country in which such activity would be unlawful.



Residence 1401

Highlights

4 Bedrooms
3 Bathrooms
Powder Room

Indoor Area

3525 ft² / 328 m²

Outdoor Living

2280 ft² / 212 m²

Total Area

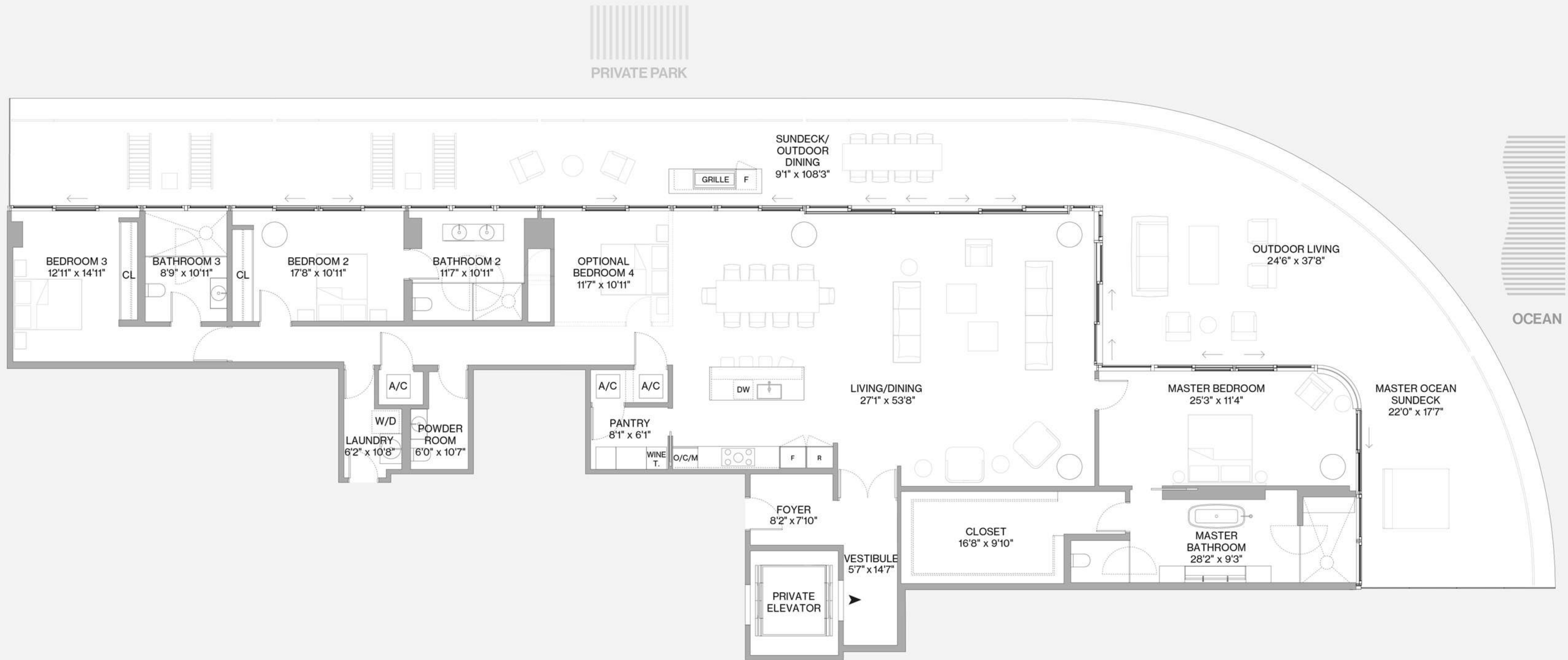
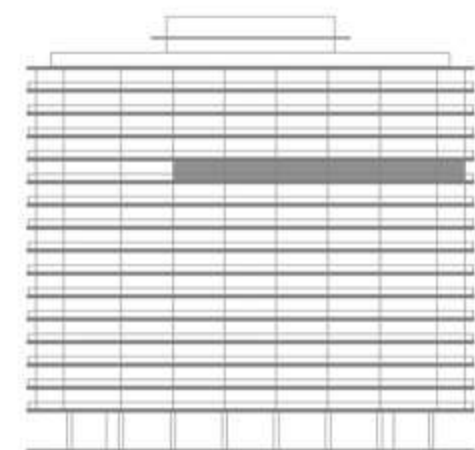
5805 ft² / 540 m²

Balcony Linear Length

178'4"

Scale

3/32" = 1'0"



This project is being developed by 8701 Collins Development, LLC, a Delaware limited liability company ("Developer"), which has a limited right to use the trademarked names and logos of Terra and Bizzi & Partners Development. Any and all statements, disclosures and/or representations shall be deemed made by Developer and not by Terra and Bizzi & Partners Development and you agree to look solely to Developer (and not to Terra and Bizzi & Partners Development and/or each of their affiliates) with respect to any and all matters relating to the sales and marketing and/or development of the project. Stated square footages and dimensions are measured to the exterior boundaries of the exterior walls and the centerline of interior demising walls and in fact vary from the square footage and dimensions that would be determined by using the description and definition of the "Unit" set forth in the Declaration (which generally only includes the interior airspace between the perimeter walls and excludes all interior structural components and other common elements). This method is generally used in sales materials and is provided to allow a prospective buyer to compare the Units with units in other condominium projects that utilize the same method. Measurements of rooms set forth on this floor plan are generally taken at the farthest points of each given room (as if the room were a perfect rectangle), without regard for any cutouts or variations. Accordingly, the area of the actual room will typically be smaller than the product obtained by multiplying the stated length and width. All dimensions are estimates which will vary with actual construction, and all floor plans, specifications and other development plans are subject to change and will not necessarily accurately reflect the final plans and specifications for the development. ORAL REPRESENTATIONS CANNOT BE RELIED UPON AS CORRECTLY STATING THE REPRESENTATIONS OF THE DEVELOPER. FOR CORRECT REPRESENTATIONS, MAKE REFERENCE TO THIS BROCHURE AND TO THE DOCUMENTS REQUIRED BY SECTION 718.503, FLORIDA STATUTES, TO BE FURNISHED BY A DEVELOPER TO A BUYER OR LESSEE. These materials are not intended to be an offer to sell, or solicitation to buy a unit in the condominium. Such an offering shall only be made pursuant to the prospectus (offering circular) for the condominium and no statements should be relied upon unless made in the prospectus or in the applicable purchase agreement. In no event shall any solicitation, offer or sale of a unit in the condominium be made in, or to residents of, any state or country in which such activity would be unlawful.



Residence 1501

Highlights

- 4 Bedrooms
- 3 Bathrooms
- Powder Room
- Staff

Indoor Area

3578 ft² / 332 m²

Outdoor Living

2280 ft² / 212 m²

Total Area

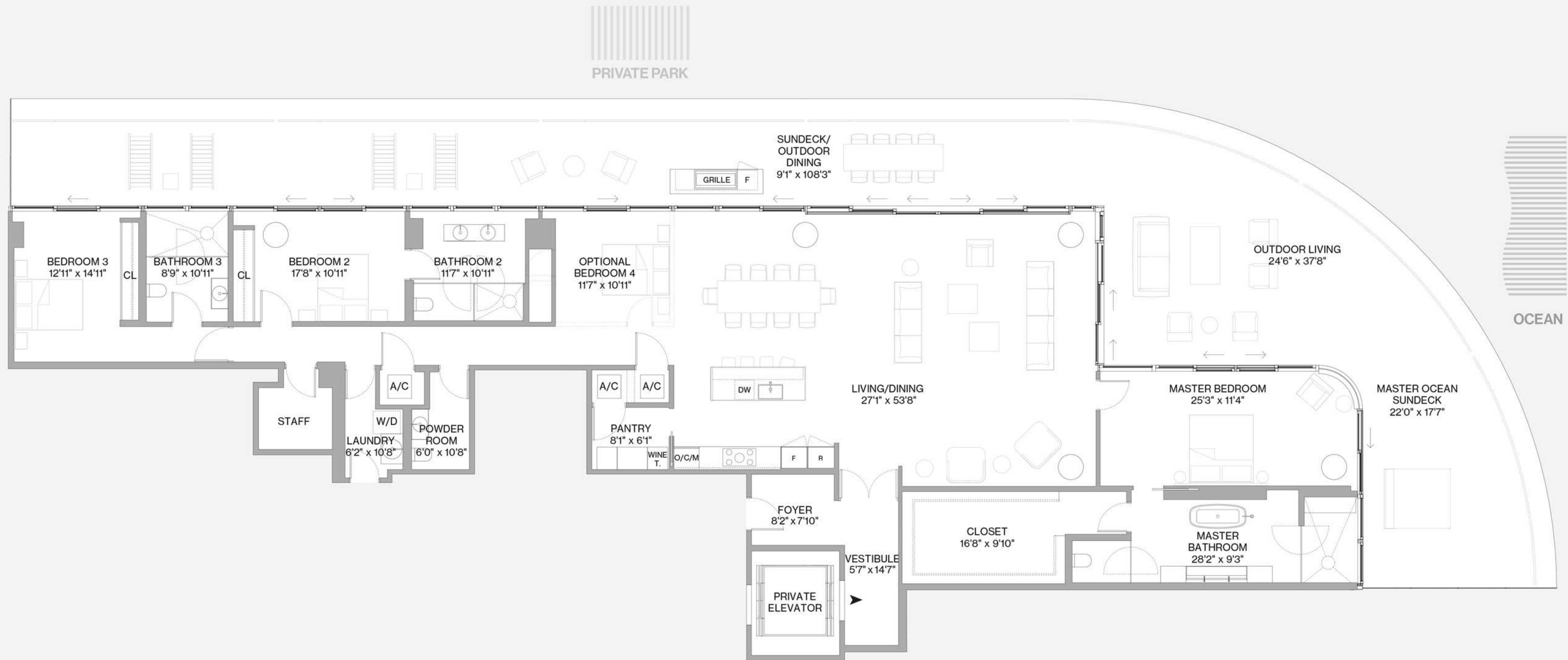
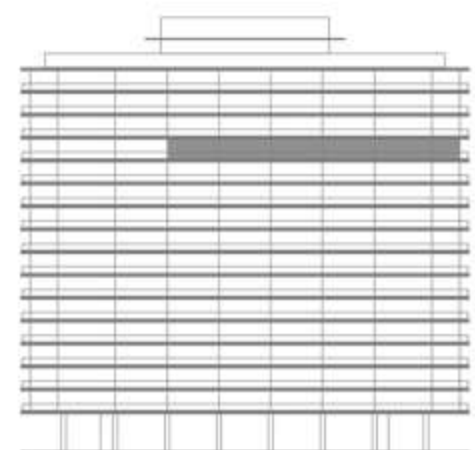
5858 ft² / 544 m²

Balcony Linear Length

178'4"

Scale

3/32" = 1'0"



This project is being developed by 8701 Collins Development, LLC, a Delaware limited liability company ("Developer"), which has a limited right to use the trademarked names and logos of Terra and Bizzzi & Partners Development. Any and all statements, disclosures and/or representations shall be deemed made by Developer and not by Terra and Bizzzi & Partners Development and you agree to look solely to Developer (and not to Terra and Bizzzi & Partners Development and/or each of their affiliates) with respect to any and all matters relating to the sales and marketing and/or development of the project. Stated square footages and dimensions are measured to the exterior boundaries of the exterior walls and the centerline of interior demising walls and in fact vary from the square footage and dimensions that would be determined by using the description and definition of the "Unit" set forth in the Declaration (which generally only includes the interior airspace between the perimeter walls and excludes all interior structural components and other common elements). This method is generally used in sales materials and is provided to allow a prospective buyer to compare the Units with units in other condominium projects that utilize the same method. Measurements of rooms set forth on this floor plan are generally taken at the farthest points of each given room (as if the room were a perfect rectangle), without regard for any cutouts or variations. Accordingly, the area of the actual room will typically be smaller than the product obtained by multiplying the stated length and width. All dimensions are estimates which will vary with actual construction, and all floor plans, specifications and other development plans are subject to change and will not necessarily accurately reflect the final plans and specifications for the development. ORAL REPRESENTATIONS CANNOT BE RELIED UPON AS CORRECTLY STATING THE REPRESENTATIONS OF THE DEVELOPER. FOR CORRECT REPRESENTATIONS, MAKE REFERENCE TO THIS BROCHURE AND TO THE DOCUMENTS REQUIRED BY SECTION 718.503, FLORIDA STATUTES, TO BE FURNISHED BY A DEVELOPER TO A BUYER OR LESSEE. These materials are not intended to be an offer to sell, or solicitation to buy a unit in the condominium. Such an offering shall only be made pursuant to the prospectus (offering circular) for the condominium and no statements should be relied upon unless made in the prospectus or in the applicable purchase agreement. In no event shall any solicitation, offer or sale of a unit in the condominium be made in, or to residents of, any state or country in which such activity would be unlawful.



Floor 12 — 17
Residence BD2

Highlights
5 Bedrooms
5 Bathrooms
Powder Room

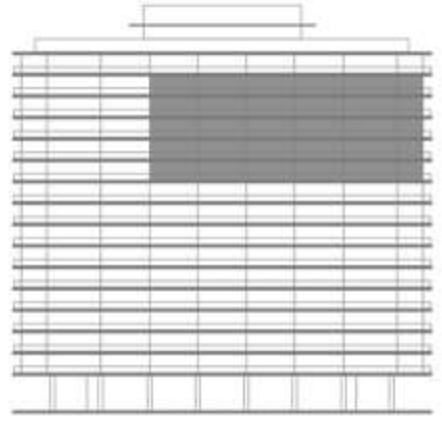
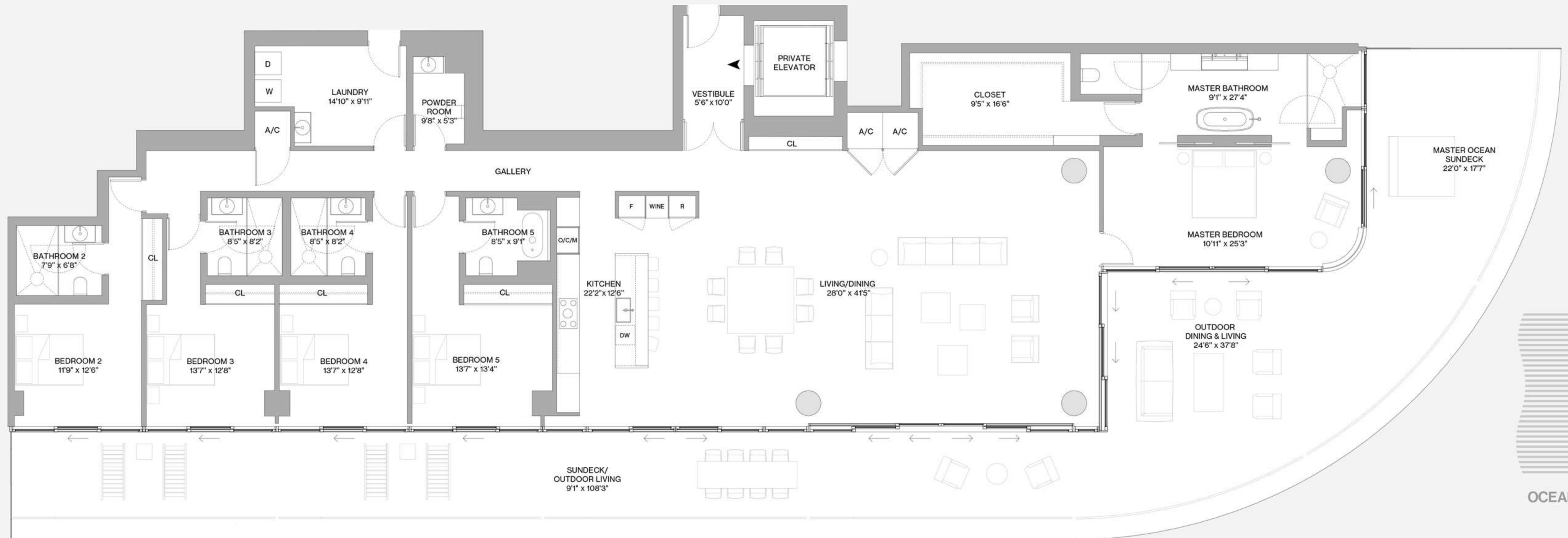
Indoor Area
4140 ft² / 385 m²

Outdoor Living
2280 ft² / 212 m²

Total Area
6420 ft² / 597 m²

Balcony Linear Length
178'4"

Scale
3/32" = 1'0"



This project is being developed by 8701 Collins Development, LLC, a Delaware limited liability company ("Developer"), which has a limited right to use the trademarked names and logos of Terra and Bizzi & Partners Development. Any and all statements, disclosures and/or representations shall be deemed made by Developer and not by Terra and Bizzi & Partners Development and you agree to look solely to Developer (and not to Terra and Bizzi & Partners Development and/or each of their affiliates) with respect to any and all matters relating to the sales and marketing and/or development of the project. Stated square footages and dimensions are measured to the exterior boundaries of the exterior walls and the centerline of interior demising walls and in fact vary from the square footage and dimensions that would be determined by using the description and definition of the "Unit" set forth in the Declaration (which generally only includes the interior airspace between the perimeter walls and excludes all interior structural components and other common elements). This method is generally used in sales materials and is provided to allow a prospective buyer to compare the Units with units in other condominium projects that utilize the same method. Measurements of rooms set forth on this floor plan are generally taken at the farthest points of each given room (as if the room were a perfect rectangle), without regard for any cutouts or variations. Accordingly, the area of the actual room will typically be smaller than the product obtained by multiplying the stated length and width. All dimensions are estimates which will vary with actual construction, and all floor plans, specifications and other development plans are subject to change and will not necessarily accurately reflect the final plans and specifications for the development. ORAL REPRESENTATIONS CANNOT BE RELIED UPON AS CORRECTLY STATING THE REPRESENTATIONS OF THE DEVELOPER. FOR CORRECT REPRESENTATIONS, MAKE REFERENCE TO THIS BROCHURE AND TO THE DOCUMENTS REQUIRED BY SECTION 718.503, FLORIDA STATUTES, TO BE FURNISHED BY A DEVELOPER TO A BUYER OR LESSEE. These materials are not intended to be an offer to sell, or solicitation to buy a unit in the condominium. Such an offering shall only be made pursuant to the prospectus (offering circular) for the condominium and no statements should be relied upon unless made in the prospectus or in the applicable purchase agreement. In no event shall any solicitation, offer or sale of a unit in the condominium be made in, or to residents of, any state or country in which such activity would be unlawful.



Floor 11
Residence BD

Highlights
5 Bedrooms
5 Bathrooms
Powder Room

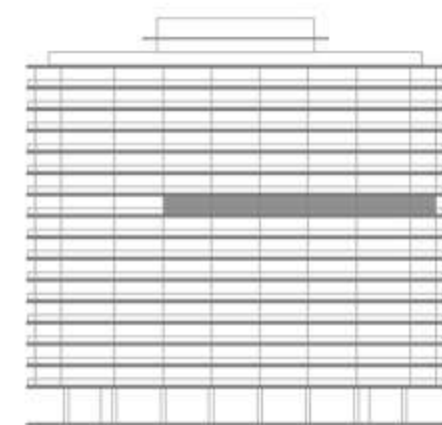
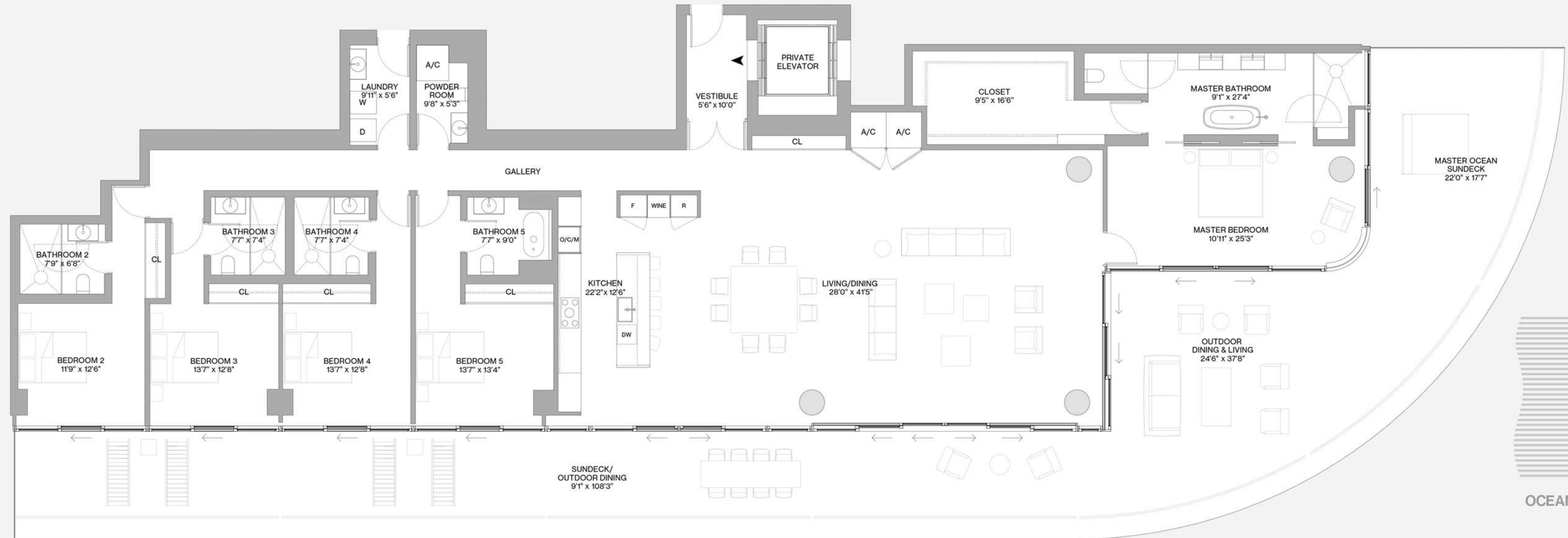
Indoor Area
4027 ft² / 374 m²

Outdoor Living
2280 ft² / 212 m²

Total Area
6307 ft² / 586 m²

Balcony Linear Length
178'4"

Scale
3/32" = 1'0"



This project is being developed by 8701 Collins Development, LLC, a Delaware limited liability company ("Developer"), which has a limited right to use the trademarked names and logos of Terra and Bizzi & Partners Development. Any and all statements, disclosures and/or representations shall be deemed made by Developer and not by Terra and Bizzi & Partners Development and you agree to look solely to Developer (and not to Terra and Bizzi & Partners Development and/or each of their affiliates) with respect to any and all matters relating to the sales and marketing and/or development of the project. Stated square footages and dimensions are measured to the exterior boundaries of the exterior walls and in fact vary from the square footage and dimensions that would be determined by using the description and definition of the "Unit" set forth in the Declaration (which generally only includes the interior airspace between the perimeter walls and excludes all interior structural components and other common elements). This method is generally used in sales materials and is provided to allow a prospective buyer to compare the Units with units in other condominium projects that utilize the same method. Measurements of rooms set forth on this floor plan are generally taken at the farthest points of each given room (as if the room were a perfect rectangle), without regard for any cutouts or variations. Accordingly, the area of the actual room will typically be smaller than the product obtained by multiplying the stated length and width. All dimensions are estimates which will vary with actual construction, and all floor plans, specifications and other development plans are subject to change and will not necessarily accurately reflect the final plans and specifications for the development. ORAL REPRESENTATIONS CANNOT BE RELIED UPON AS CORRECTLY STATING THE REPRESENTATIONS OF THE DEVELOPER. FOR CORRECT REPRESENTATIONS, MAKE REFERENCE TO THIS BROCHURE AND TO THE DOCUMENTS REQUIRED BY SECTION 718.503, FLORIDA STATUTES, TO BE FURNISHED BY A DEVELOPER TO A BUYER OR LESSEE. These materials are not intended to be an offer to sell, or solicitation to buy a unit in the condominium. Such an offering shall only be made pursuant to the prospectus (offering circular) for the condominium and no statements should be relied upon unless made in the prospectus or in the applicable purchase agreement. In no event shall any solicitation, offer or sale of a unit in the condominium be made in, or to residents of, any state or country in which such activity would be unlawful.

